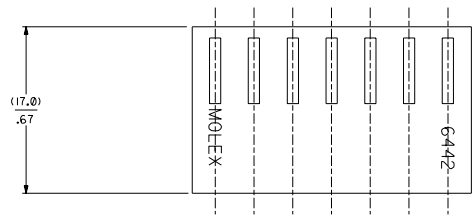


SECTION "C-C"



NO. OF CKT'S.	DIM. A	DIM. B
1	-----	(4.78+.18)
2	(3.96+.13)	.188+.007
	.156+.005	.344+.007
3	(7.92+.13)	(8.74+.18)
	.312+.005	.500+.007
4	(11.89+.13)	(12.70+.18)
	.468+.005	.656+.007
5	(15.85+.13)	(16.66+.18)
	.624+.005	.812+.007
6	(19.81+.13)	(20.62+.18)
	.780+.005	.968+.007
7	(23.77+.13)	(24.59+.18)
	.936+.005	1.124+.007
8	(27.74+.25)	(28.55+.18)
	1.092+.010	1.280+.012
9	(31.70+.25)	(32.51+.30)
	1.248+.010	1.436+.012
10	(35.66+.25)	(36.47+.30)
	1.404+.010	1.592+.012
11	(39.62+.25)	(40.44+.30)
	1.560+.010	1.748+.012
12	(43.59+.25)	(44.40+.30)
	1.716+.010	1.904+.012
13	(47.55+.30)	(48.36+.30)
	1.872+.012	2.060+.014
14	(51.51+.36)	(52.32+.36)
	2.028+.014	2.216+.016
15	(55.47+.36)	(56.29+.41)
	2.184+.014	2.372+.016
16	(59.44+.36)	(60.25+.41)
	2.340+.014	2.528+.016
17	(63.40+.36)	(64.21+.41)
	2.496+.014	2.684+.016
18	(67.36+.36)	(68.17+.41)
	2.652+.014	2.840+.016
19	(71.32+.36)	(72.14+.41)
	2.808+.014	2.996+.016
20	(75.29+.46)	(76.10+.41)
	2.964+.018	3.152+.020
21	(79.25+.46)	(80.06+.51)
	3.120+.018	3.308+.020
22	(83.21+.46)	(84.02+.51)
	3.276+.018	3.464+.020
23	(87.17+.46)	(87.99+.51)
	3.432+.018	3.620+.020
24	(91.14+.46)	(91.95+.51)
	3.588+.018	3.776+.020

- NOTES :
- HOUSING SHOWN ABOVE IS STANDARD HOUSING WITH NO OPTIONS.
 - THIS HOUSING FOR USE WITH TERMINAL NO. 6438-*, (18-22 GA.) WITH (2.79/.110) MAX. INSULATION DIA. 6838-*, (18-24 GA.) WITH (2.79/.110) MAX. INSULATION DIA. 7258-*, (22-26 GA.) WITH (1.65/.065) MAX. INSULATION DIA.
 - CIRCUIT SIZE MOLDED ON 4 THRU 24 CIRCUIT HOUSINGS ONLY.
 - SEE SHEET 2 FOR OPTIONS.
 - THIS PART COMPLIES WITH PROD. SPEC. 40-02.
 - MATERIAL: SEE LEGEND FOR MATERIAL CODE.

6442- * N - * - * - *

HOUSING OPTIONS

CODE	HOOKS	SIDE HOOKS	RAMP
BLANK	NONE	NONE	NONE
A	NONE	YES	NONE
R	NONE	NONE	FRICTION
B	NONE	NONE	TYPE B
C	NONE	NONE	TYPE C
D	NONE	NONE	TYPE D

VOLTAGE RATING OPTION
BLANK=NONE
V= *250 VAC* ON HOUSING

MAT'L. OPTION
BLANK=NYLON 6/6, 94V-2.

MOLDED VOID CODE
Z=NO VOIDS
A=CKT. 1 VOID,
B=CKT. 2 VOID, ETC.
51=1ST MULTIPLE VOID,
52=2ND MULTIPLE VOID, ETC.

NO. OF CKT'S.

4	G4	DELETE DYED PARTS
3	H	UCP2003-5590
2	F	BY 02/03 SCHAFER
1	H	G4 DEL UNTOOLED
		UCP2003-0794
		11/12/2003 SAMIEC

MFG. SH. REV. LTR. REVISIONS

DIMENSIONS SHOWN METRIC INCH

SCALE: 1" = 100.0000

DATE: 12/3/86

FILE NO. 6442

SCALE: --1--

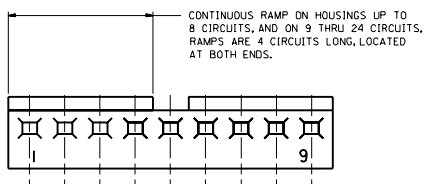
HOUSING, FOR TRIFURCON TERM., (3.96)/.156

6442 SERIES DWG.

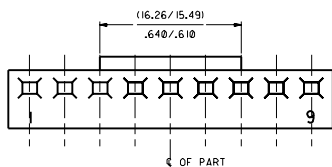
MOLEX INCORPORATED

SEE CHART

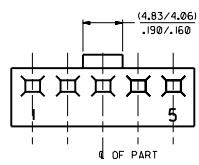
SD-6442



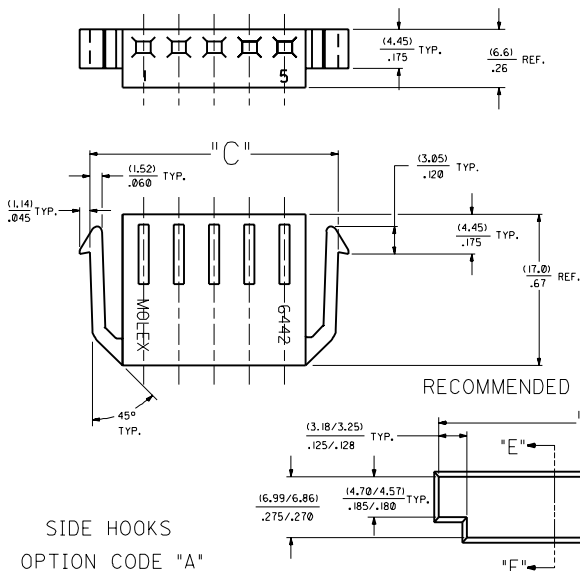
STD. RAMP OPTION CODE "R"



SELECTIVE RAMP
OPTION CODE "C"

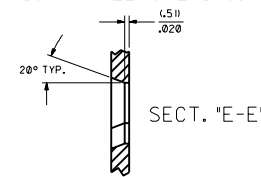
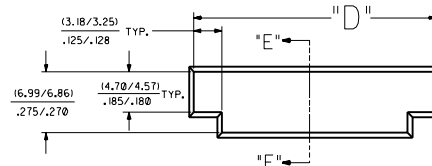


SELECTIVE RAMP
OPTION CODE "B"



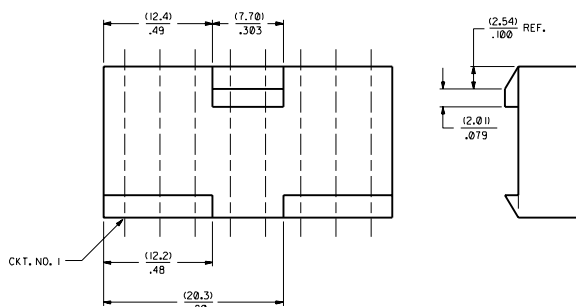
SIDE HOOKS
OPTION CODE "A"

RECOMMENDED (2.03)/.080 THICK PANEL OPENING.

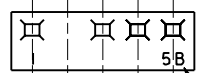


20° TYP.

SECT. "E-E"

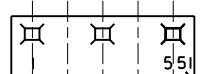


SELECTIVE RAMP OPTION CODE "D"
INTERNATIONAL PART ONLY
(8 CKT. PART ONLY)



SINGLE VOID

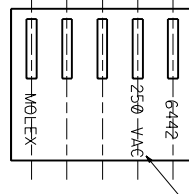
SINGLE CKT. VOID CODE



MULTIPLE VOIDS

MULTIPLE CKT. VOID CODE

MOLDED VOIDS
SEE LEGEND ON SHT. 1
SEE CHART FOR VOID CKT. LOCATIONS



OPT. VOLTAGE RATING

SEE LEGEND ON SHT. 1

NO. OF CKT S.	DIM. "C"	DIM. "D"
2	(16.48/15.60) .649/.614	(15.47/15.34) .609/.604
3	(20.45/19.56) .805/.770	(19.43/19.30) .765/.760
5	(28.37/27.48) 1.117/1.082	(27.36/27.23) 1.077/1.072

SEE SHEET 1	SEE SHEET 1	CONNECTIONS SHOWN IN METRIC INCH	REVISE ONLY ON CAD SYSTEM
SEE SHEET 1	SEE SHEET 1	TITILE	HOUSING, FOR TRIFURCON TERM., (3.96)/.156 & 6442 SERIES DWG.
SEE SHEET 1	SEE SHEET 1	DATE	12 / 5 / 86
SEE SHEET 1	SEE SHEET 1	SCALE	2
SEE SHEET 1	SEE SHEET 1	DR	MOLEX INCORPORATED
SEE SHEET 1	SEE SHEET 1	CHK	SD-6442
SEE SHEET 1	SEE SHEET 1	APP. POLYMER	SEE CHART
SEE SHEET 1	SEE SHEET 1	APP. LENS	SEE CHART
LTR. REVISIONS	LTR. REVISIONS	APP. PANEL	SEE CHART
		APP. SHIELD	SEE CHART

6442-N**			6442-RN**			6442-RN**			6442-RND**			6442-BN**			6442-CN**		
PART NO.	ENG. NO.	VOIDS	PART NO.	ENG. NO.	VOIDS	PART NO.	ENG. NO.	VOIDS	PART NO.	ENG. NO.	VOIDS	PART NO.	ENG. NO.	VOIDS	PART NO.	ENG. NO.	VOIDS
26-03-3011	6442-1-Z		26-03-4011	6442-R1-Z													
26-03-3021	6442-2-Z		26-03-4020	6442-R2-Z					26-03-7021	6442-R20-Z			6442-B1-Z			6442-C5-Z	
26-03-3031	6442-3-Z		26-03-4030	6442-R3-Z					26-03-7031	6442-R30-Z			6442-B2-Z			6442-C6-Z	
26-03-3041	6442-4-Z		26-03-4041	6442-R4-Z					26-03-7041	6442-R40-Z			6442-B3-Z			6442-C7-Z	
26-03-3051	6442-5-Z		26-03-4050	6442-R5-Z						6442-R50-Z			6442-B4-Z			6442-C8-Z	
26-03-3061	6442-6-Z		26-03-4061	6442-R6-Z						6442-R60-Z			6442-B5-Z			6442-C9-Z	
26-03-3071	6442-7-Z		26-03-4070	6442-R7-Z					26-03-7071	6442-R70-Z			6442-B6-Z			6442-C10-Z	
26-03-3081	6442-8-Z		26-03-4081	6442-R8-Z						6442-R80-Z			6442-B7-Z			6442-C11-Z	
26-03-3091	6442-9-Z		26-03-4090	6442-R9-Z					26-03-7091	6442-R90-Z			6442-B8-Z			6442-C12-Z	
26-03-3101	6442-10-Z		26-03-4101	6442-R10-Z						6442-R100-Z			6442-B9-Z			6442-C13-Z	
26-03-3111	6442-11-Z		26-03-4111	6442-R11-Z						6442-R110-Z			6442-B10-Z			6442-C14-Z	
26-03-3121	6442-12-Z		26-03-4121	6442-R12-Z					26-03-7121	6442-R120-Z			6442-B11-Z			6442-C15-Z	
26-03-3131	6442-13-Z		26-03-4131	6442-R13-Z						6442-R130-Z			6442-B12-Z			6442-C16-Z	
26-03-3141	6442-14-Z		26-03-4141	6442-R14-Z						6442-R140-Z			6442-B13-Z			6442-C17-Z	
26-03-3151	6442-15-Z		26-03-4151	6442-R15-Z						6442-R150-Z			6442-B14-Z			6442-C18-Z	
26-03-3161	6442-16-Z		26-03-4161	6442-R16-Z						6442-R160-Z			6442-B15-Z			6442-C19-Z	
26-03-3171	6442-17-Z		26-03-4171	6442-R17-Z					26-03-7171	6442-R170-Z			6442-B16-Z			6442-C20-Z	
26-03-3181	6442-18-Z		26-03-4181	6442-R18-Z						6442-R180-Z			6442-B17-Z			6442-C21-Z	
26-03-3191	6442-19-Z		26-03-4191	6442-R19-Z						6442-R190-Z			6442-B18-Z			6442-C22-Z	
26-03-3201	6442-20-Z		26-03-4201	6442-R20-Z						6442-R200-Z			6442-B19-Z			6442-C23-Z	
26-03-3211	6442-21-Z		26-03-4211	6442-R21-Z						6442-R210-Z			6442-B20-Z			6442-C24-Z	
26-03-3221	6442-22-Z		26-03-4221	6442-R22-Z						6442-R220-Z			6442-B21-Z				
26-03-3231	6442-23-Z		26-03-4231	6442-R23-Z						6442-R230-Z			6442-B22-Z				
26-03-3241	6442-24-Z		26-03-4241	6442-R24-Z						6442-R240-Z			6442-B23-Z				
	6442-15-B	2	26-03-4043	6442-R4-C	3				26-03-7042	6442-R40-B	2		6442-B24-Z				
	6442-9-B	2	26-03-4055	6442-R5-E	5				26-03-7072	6442-R70-C	3						
	6442-12-F	6	26-03-4065	6642-R6-E	5				26-03-7092	6442-R90-B	2						
	6442-7-5I	1,7	26-03-4086	6442-R8-F	6				26-03-7093	6442-R90-E	5						
	6442-9-5I	1,9	26-03-4097	6442-R9-G	7				26-03-7122	6442-R120-E	5						
	6442-9-52	2,9	26-03-4108	6442-R10-H	8				26-03-7172	6442-R170-E	5						
	6442-8-B	2	26-03-4120	6442-R12-J	10												
	6442-8-F	6	26-03-4157	6442-R15-C	7												
	6442-10-D	4	26-03-4073	6442-R7-C	3												
	6442-5-B	2	26-03-4094	6442-R9-D	4												
	6442-10-B	2	26-03-4096	6442-R9-F	6												
	6442-5-C	3	26-03-4092	6442-R9-B	2												
	6442-13-B	2	26-03-4064	6442-R6-D	4												
	6442-11-E	5	26-03-4075	6442-R7-E	5												
			26-03-4095	6442-R9-E	5												
			26-03-4085	6442-R8-E	5												
			26-03-4072	6442-R7-B	2												
			26-03-4063	6442-R6-C	3												
			26-03-4062	6442-R6-B	2												
			26-03-4125	6442-R12-E	5												
			26-03-4123	6442-R12-C	3												
			26-03-4076	6442-R7-F	6												
			26-03-4129	6442-R12-I	9												
			26-03-4143	6442-R14-C	3												
			26-03-4093	6442-R9-C	3												
			26-03-4054	6442-R5-D	4												
			26-03-4052	6442-R5-B	2												
			26-03-4103	6442-R10-C	3												
			26-03-4042	6442-R4-B	2												
			26-03-4106	6442-R10-F	6												
				6442-R12-F	6												
			26-03-4112	6442-R11-B	2												
				6442-R13-B	2												
			26-03-4175	6442-R17-E	5												
			26-03-4102	6442-R10-B	2												
			26-03-4032	6442-R3-B	2												
			26-03-4082	6442-R8-B	2												
				6442-R7-5I	1,7												
				6442-R9-5I	1,9												
			26-03-4099	6442-R9-52	2,9												
			26-03-4149	6442-R14-M	13												
				6442-R4-A	1												
			26-03-4152	6442-R15-N	14												
				6442-R10-5I	1,10												
			26-03-4083	6442-R-08-C	3												

SEE SHEET 1	DIMENSIONS SHOWN IN METRIC UNITS UNLESS OTHERWISE SPECIFIED INDICATED BY A "1" FOLLOWING THE UNIT 1 PLATE INCH 2 PLATE INCH 3 PLATE INCH	REVISIONS	DATE: 12 / 2 / 86
SEE SHEET 1			
SEE SHEET 1			
SEE SHEET 1			
SEE SHEET 1	MATERIALS LIST: SEE DRAWING FOR MATERIALS LIST SCALE: --1--	REVISED BY: LTR	DATE: 12 / 2 / 86
SEE SHEET 1			
SEE SHEET 1			
SEE SHEET 1			
SEE SHEET 1	MATERIALS LIST: SEE DRAWING FOR MATERIALS LIST SCALE: --1--	REVISED BY: LTR	DATE: 12 / 2 / 86
SEE SHEET 1			
SEE SHEET 1			
SEE SHEET 1			